

SAVING UKRAINE'S CULTURE HERITAGE IN TIMES OF WAR

Dr. Richard Kurin


Smithsonian Distinguished Scholar & Ambassador at Large

September 22, 2022

Ukrainian Museum, New York



Smithsonian Institution



Smithsonian—the U.S. national museum, research and educational institution



Smithsonian
Cultural Rescue Initiative



LIVE KICKOFF EVENT | SEPT 16 AT 11 ET

**REINVENTING THE
MONUMENTS MEN AND WOMEN
FOR THE 21ST-CENTURY FORCE**



SMITHSONIAN INSTITUTION

**FIRST AID TO
CULTURAL HERITAGE
IN TIMES OF CRISIS**

2-29 June 2016

WASHINGTON D.C. USA





Smithsonian
Cultural Rescue Initiative

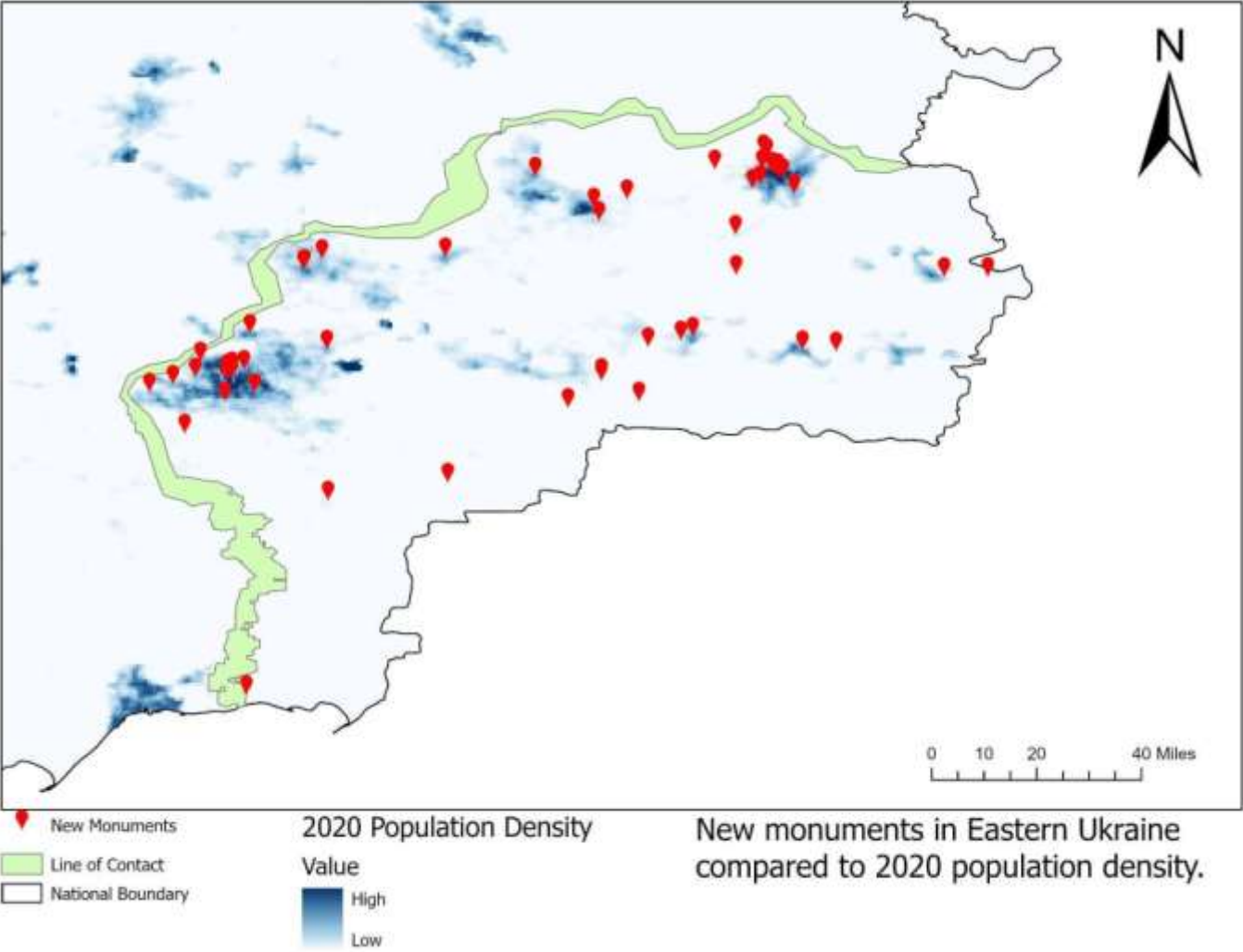


CIDCM
CENTER FOR INTERNATIONAL
DEVELOPMENT & CONFLICT MANAGEMENT



Donbas Region

Monument Theme	Number of Monuments	Percentage
2014	42	65.63%
Artist	3	4.69%
Military	3	4.69%
Religion	1	1.56%
Russian Empire	1	1.56%
Russian Media	5	7.81%
Stalin	2	3.13%
WWII	7	10.94%
Total	64	100.00%

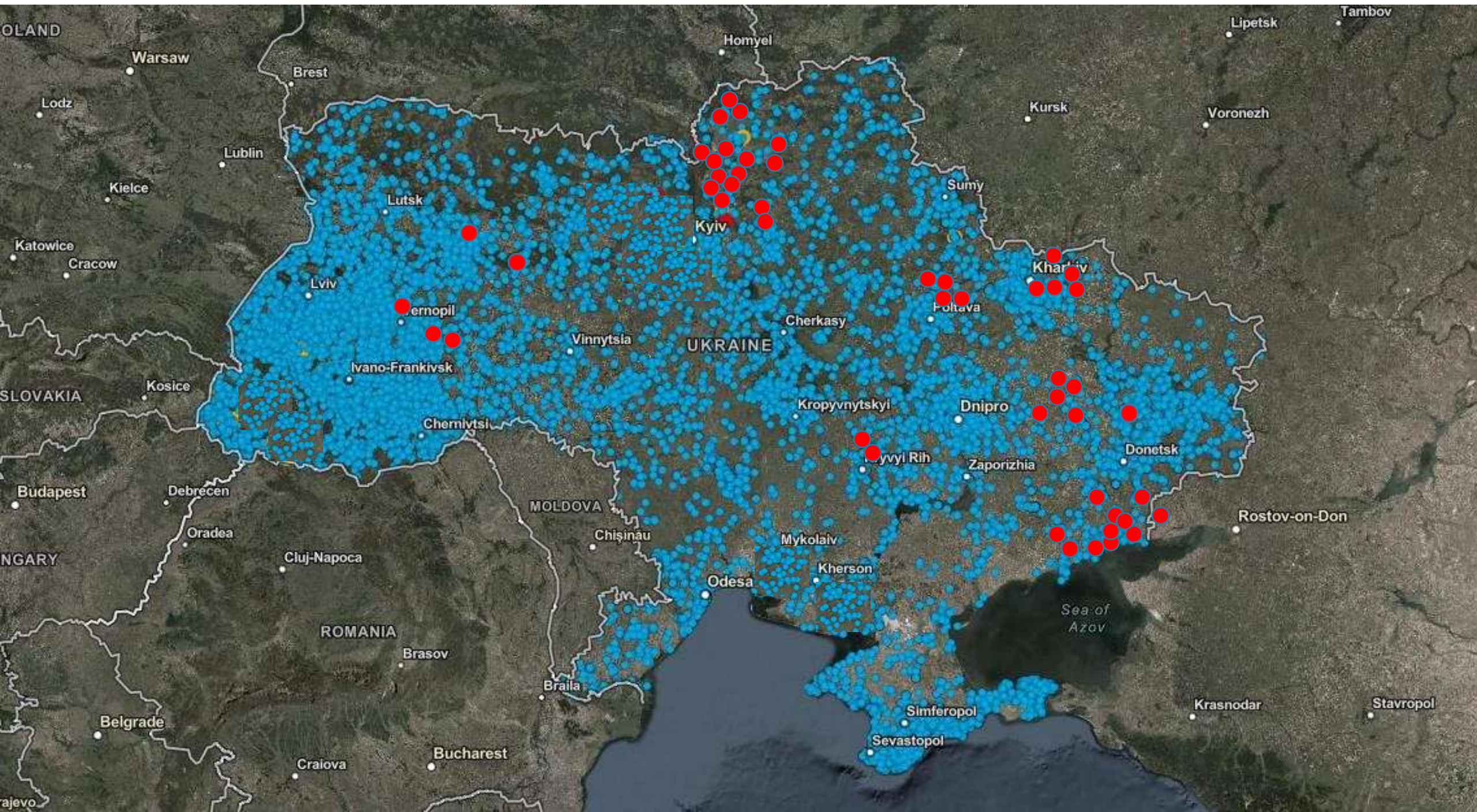


Cultural Heritage in Ukraine: a Gap in Russian IO Monitoring, Damian Koropecy, *Small Wars Journal*, January 22, 2022



28,401 cultural heritage sites in monitoring database





Ivankiv District Museum of History and Local Lore



Before



After

**Roof gone, no surrounding craters
or collateral damage evident**



Maria Prymachenko







Home > Office of the Spokesperson > Press Releases > Promoting Accountability for War Crimes and Other Atrocities in Ukraine



Promoting Accountability for War Crimes and Other Atrocities in Ukraine

CONFLICT OBSERVATORY

A central hub to capture, analyze, and make widely available evidence of Russia-perpetrated war crimes and other atrocities in Ukraine.

17 May 2022

EVIDENCE OF WIDESPREAD AND SYSTEMATIC BOMBARDMENT OF UKRAINIAN HEALTHCARE FACILITIES

The Yale Humanitarian Research Lab (HRL) has identified 22 healthcare facilities in Ukraine that sustained damage from apparent Russia-aligned bombardment between 24 February and 29 March

9 May 2022

UKRAINIAN CULTURAL HERITAGE POTENTIAL IMPACT SUMMARY

The Cultural Heritage Monitoring Lab and the Smithsonian Cultural Rescue Initiative are monitoring over 28,000 cultural heritage sites in Ukraine. This effort began in April 2021 and employs a combination of remote sensing, open-source research, and satellite imagery tasking to gather evidence of cultural heritage damage. This report provides a summary of potential impacts to cultural heritage sites following

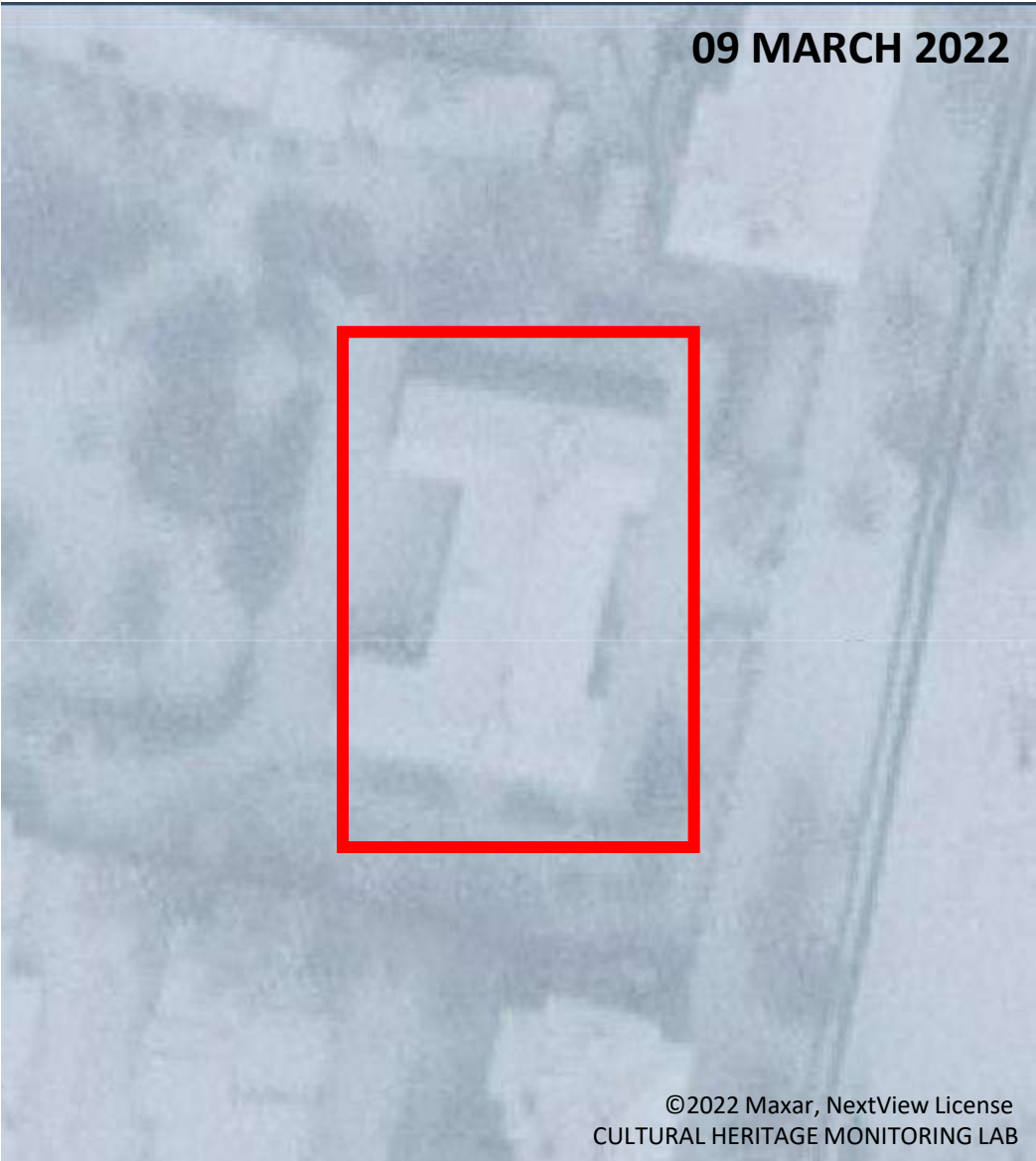
ABOUT US

The Conflict Observatory will analyze and preserve publicly and commercially accessible information, including satellite imagery and information shared via social media, consistent with international legal standards for use in ongoing and future accountability mechanisms. This includes maintaining rigorous chain-of-custody procedures for future civil and criminal legal

Hryhorii Skovoroda Literary Memorial Museum



Rubizhne City Museum



Church in honor of the Holy Martyrs Faith, Hope, and Love and Their Mother Sophia



Potential Damage to Ukrainian Cultural Heritage Sites

24 FEBRUARY 2022 TO 31 AUGUST 2022

The Virginia Museum of Natural History's Cultural Heritage Monitoring Lab (CHML), the Smithsonian Cultural Rescue Initiative (SCRI), and the University of Maryland's Center for International Development and Conflict Management (CIDCM) have been monitoring 28,401 cultural heritage sites in Ukraine.

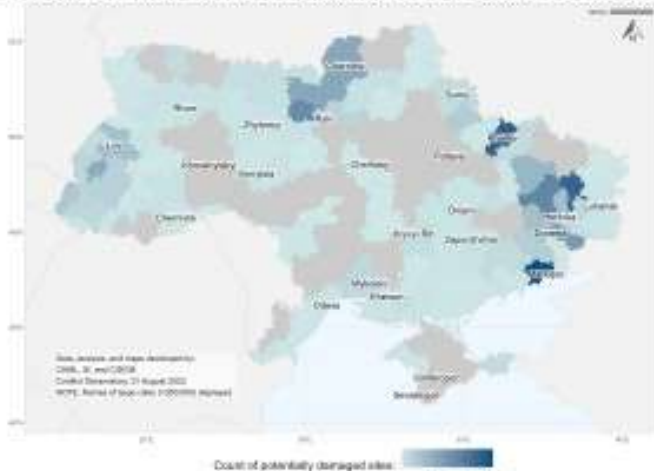
KEY FINDINGS:

Heritage Type	Count	Percent
Memorial/Monument	658	43.8%
Place of Worship and Burial	488	32.5%
Museum	115	7.7%
Library/Archive	99	6.6%
Heritage Building	97	6.5%
Other	24	1.6%
Archaeological Site	11	0.7%
Performance Center	9	0.6%
Total	1,501	100%

- The research team has identified potential damage to 1,501 cultural heritage sites.
- The research team identifies potential damage using infrared satellite sensors and media reports. Proximity to a heat signature indicates that a cultural heritage site has a moderate to high probability of damage (excluding agricultural burning).
- The total number of potentially damaged sites represents 5.3% of the 28,401 sites monitored by CHML, SCRI, and CIDCM. Learn more at: <https://conflictobservatory.org>.
- To date, imagery analysis has **confirmed damage to 207** of the 1,501 potentially damaged sites. Learn more at: <https://bit.ly/3f6zcp2>.

- Detailed analysis of damage to 10 cultural heritage sites can be found at: <https://bit.ly/3qN0zA2>.

DISTRIBUTION OF POTENTIALLY DAMAGED CULTURAL HERITAGE SITES



As of 31 August

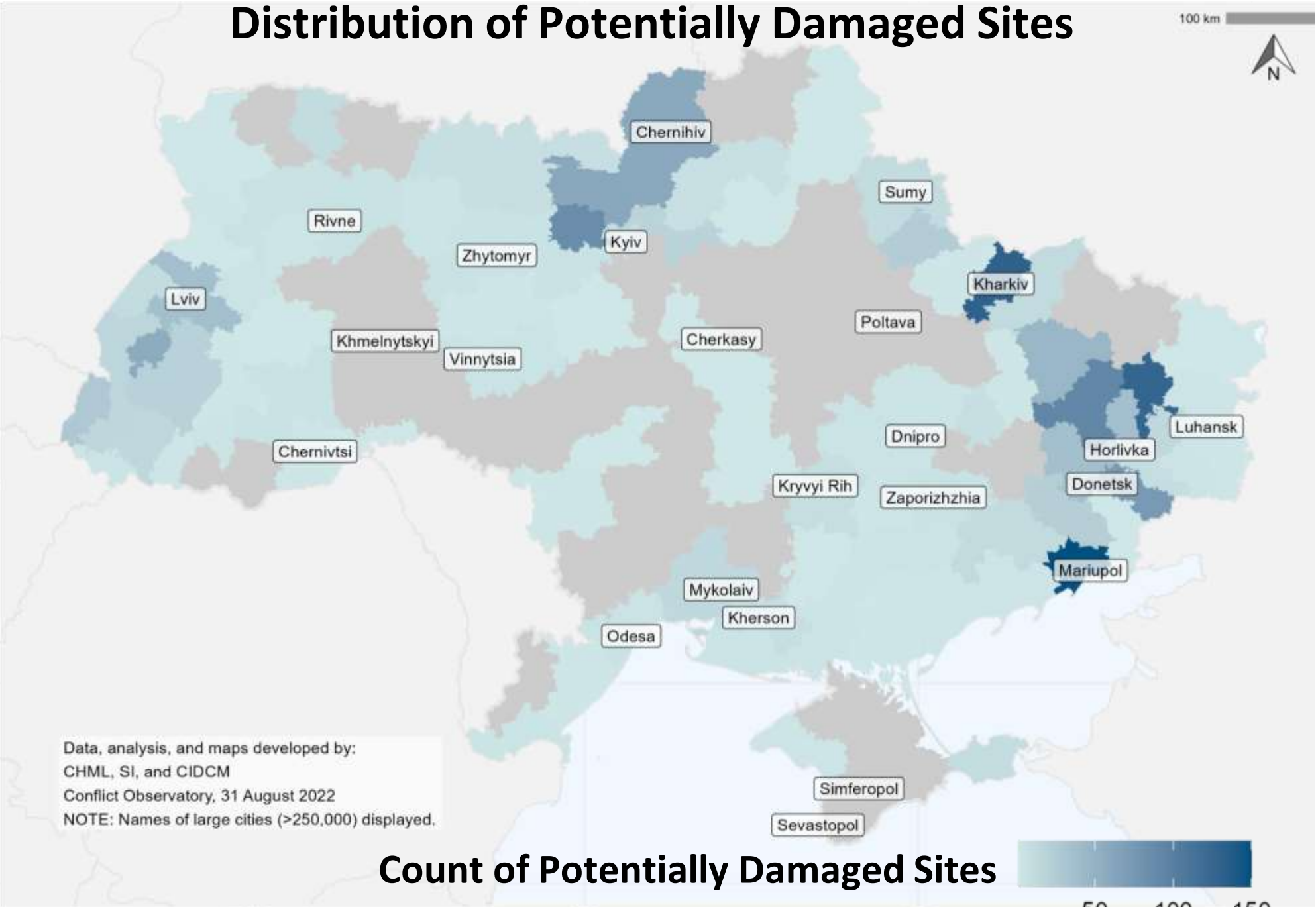
Heritage Type	Count	Percent
Memorial/Monument	658	43.8%
Place of Worship and Burial	488	32.5%
Museum	115	7.7%
Library/Archive	99	6.6%
Heritage Building	97	6.5%
Other	24	1.6%
Archaeological Site	11	0.7%
Performance Center	9	0.6%
Total	1,501	100%

207 CONFIRMED BY SATELLITE IMAGERY

Distribution of Potentially Damaged Sites

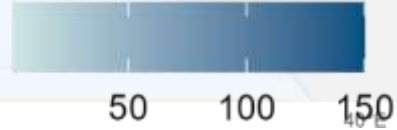


52°N
50°N
48°N
46°N
44°N



Data, analysis, and maps developed by:
CHML, SI, and CIDCM
Conflict Observatory, 31 August 2022
NOTE: Names of large cities (>250,000) displayed.

Count of Potentially Damaged Sites



25°E 30°E 35°E 50 100 150

